

August 23, 2024  
Artizon Museum, Ishibashi Foundation

## Looking Human: The Figure Painting

November 2 [Sat], 2024–February 9 [Sun], 2025



André DERAÏN, *Portrait of Vlaminck playing the Violin*, 1905, Artizon Museum, Ishibashi Foundation

The Artizon Museum, Ishibashi Foundation (Director: Ishibashi Hiroshi), presents *Looking Human: The Figure Painting*.

Pliny the Elder's encyclopedic *Naturalis Historia* (77 CE) includes the story of the daughter of a ceramic tile maker in Corinth, a city in ancient Greece, wanting a record of the young man she loved, who was setting out on a trip. She drew an outline of his shadow on the wall.

In the latter half of the 18th and the early 19th century, that story was often mentioned as the origin of painting. In fact, if we look at the history of art in Europe, "depicting a person," figure painting, has long been a significant genre. Self-portraits by Edouard Manet and Paul Cézanne both demonstrate their abilities and were opportunities to experiment with new creative approaches. Pierre-Auguste Renoir's portraits were an important source of income for him. In addition to actual human figures, portraits also depict the characters in stories.

This exhibition introduces a rich variety of figure paintings through 85 works from the Ishibashi Foundation Collection—looking human, from ancient Greek ceramics to modern European paintings.

## Exhibition Highlights

### 1. A panoramic view of figure paintings by modern European painters, including Manet, Cézanne, and Renoir

This exhibition presents a comprehensive view of figure paintings by artists active in Europe in the 19th and 20th centuries, including Manet, Cézanne, and Renoir. If we consider the relationship between model and painter, for example, we find artists who had relationships with the artists who painted them, their contemporaries. In André Derain's *Portrait of Vlaminck Playing the Violin*, Vlaminck was his model. Derain's signature is on the lower right of the painting; on the lower left is the inscription, "My portrait by Derain." By exploring these paintings' context—Who was the model? What was the story being depicted?—you will enjoy the masterly figure paintings being exhibited here from new points of view.



Left : André DERAINE, *Portrait of Vlaminck playing the Violin*, 1905, Artizon Museum, Ishibashi Foundation

Middle : Paul CÉZANNE, *Self-Portrait with a Hat*, c. 1890-94, Artizon Museum, Ishibashi Foundation

Right: Pierre-Auguste RENOIR, *Mlle Georgette Charpentier Seated*, 1876, Artizon Museum, Ishibashi Foundation

### 2. Ancient Greek Ceramics, Exhibited in One Setting

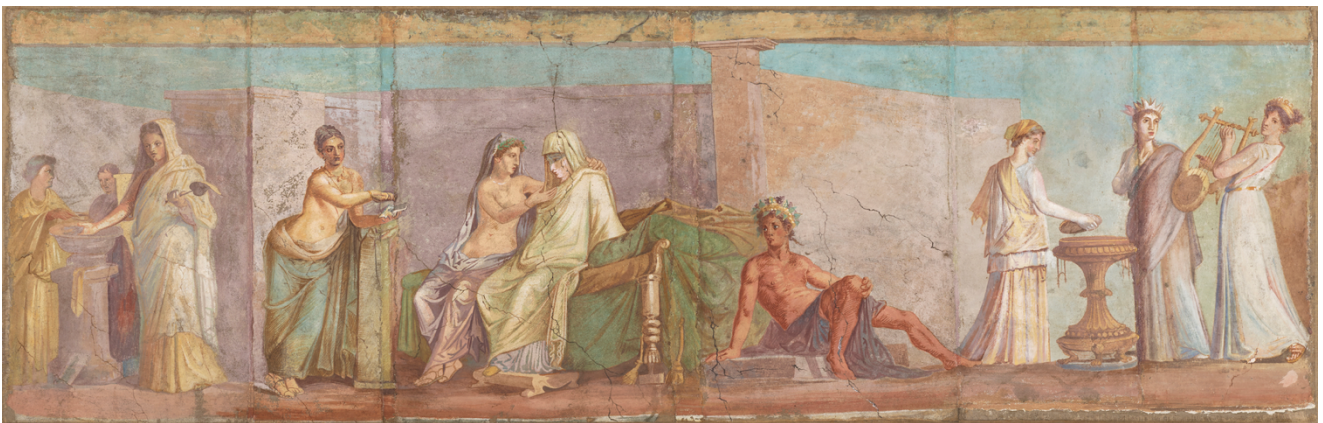
Enjoy 30 examples of ancient Greek ceramic vessels displayed together. These ceramics are decorated with a variety of images, including "Herakles and Kerberos," "Man and Woman" and "Woman" figures. As you explore them, compare their representations of the human figure with those by modern European artists, to grasp the abundance of styles and expressive approaches that have emerged.



Left : Painter of Boulogne 441, *Attic Black-Figure Neck-Amphora, Herakles and Kerberos*, c. 520-510 B.C., Artizon Museum, Ishibashi Foundation  
 Middle : Maplewood Painter, *Apulian Red-Figure Bell-Krater, Man and Woman*, The 2nd quarter of the 4th century B.C. Artizon Museum, Ishibashi Foundation  
 Right : Rochester Group, *Apulian Red-Figure Lekythos, Woman*, c.340 B.C., Artizon Museum, Ishibashi Foundation

### 3. First exhibition of copies of ancient Roman works by Fujishima Takeji and Hasegawa Roka

Japanese artists who traveled to Italy have found ancient Roman works fascinating. This exhibition presents, along with ancient Roman mosaics and fragments of murals, copies made by two modern Japanese painters, Fujishima Takeji and Hasegawa Roka. These copies are being displayed for the first time since the opening of the Artizon Museum. How did these two artists express the people in those ancient Roman works? Enjoy this intense cross-cultural exploration.



HASEGAWA Roka, *Copy after The Aldobrandini Wedding*, 1955-56  
 Artizon Museum, Ishibashi Foundation

### Additional Major Works on Display



Eva GONZALÈS, *Sleep*, c.1877-78  
 Artizon Museum, Ishibashi Foundation



Henri MATISSE, *Patitcha (La Sultane)*, 1947  
 Artizon Museum, Ishibashi Foundation



Alberto GIACOMETTI, *Yanaihara*, 1958, Artizon Museum, Ishibashi Foundation



Pablo PICASSO, *The Painter and His Model*, 1963,  
 Artizon Museum, Ishibashi Foundation  
 ★ © 2024 - Succession Pablo Picasso - BCF (JAPAN)

## Exhibition Overview

Exhibition title:	Looking Human: The Figure Painting
Organized by	Artizon Museum, Ishibashi Foundation
Venue:	Artizon Museum, 5F Gallery
Exhibition period:	November 2 [Sat], 2024 – February 9 [Sun], 2025
Opening hours:	10:00 - 18:00 (until 20:00 on Fridays) *Last entry 30 minutes before closing.
Closed:	Mondays (except November 4, January 13), November 5, December 28 – January 3, 14
Admission (incl. tax):	Timed entry system (Online booking starts from September 3, 2024) Online ticket: 1,200 yen In-Person ticket (purchase at museum): 1,500 yen Students: Free entry (Advance online booking required.) *In-Person ticket may be purchased at the museum, if the time slot is not full. *Advance booking is not required for children up to junior high school age. *This admission fee gives the visitor access to the concurrent exhibitions.
Curators:	KAGAWA Kyoko, HARA Sayuri

## Concurrent exhibitions



MOHRI Yuko, *Sketch for Piano Solo: Belle-Île*, 2024  
 Courtesy of the artist

### Jam Session: The Ishibashi Foundation Collection × MOHRI Yuko– *On Physis* (6F Gallery)

The Artizon Museum has been holding its annual Jam Session, an exhibition consisting of a collaboration of works from the Ishibashi Foundation Collection and new works by a contemporary artist, since the museum opened in 2020. For the fifth Jam Session, we have invited Mohri Yuko, an artist of world-wide acclaim, to take part.

This exhibition, Mohri's first large-scale exhibition in Tokyo, presents new and older works by Mohri along with works from the Ishibashi Foundation Collection chosen from her perspective as an artist, presenting "an organic, tranquil space filled with subtle sounds and motions" to be experienced only here.



Henri MATISSE, *Dancer and Armchair, Black Background*, 1942  
Artizon Museum, Ishibashi Foundation

## Selections from the Ishibashi Foundation Collection Special Section Matisse's Studio (4F Gallery)

Interiors were consistently important elements in paintings by Henri Matisse (1869-1954). Particularly from the 1940s on, his studio was a vitally important space, where daily life and creating came together. This exhibition, in connection with the acquisition of his *Dancer and Armchair, Black Background* (1942), explores, through works in the Ishibashi Foundation Collection and from multiple viewpoints, the role of the studio in Matisse's paintings.

Artizon Museum  
1-7-2 Kyobashi Chuo-ku Tokyo 104-0031 Japan  
Tel. Domestic: 050-5541-8600 International: +81 47-316-2772 (Hello Dial)  
<https://www.artizon.museum/en/>

Directions: 5 minutes on foot from JR Tokyo Station (Yaesu Central Exit); Tokyo Metro Ginza Line Kyobashi Station (No.6, 7 Exit); Tokyo Metro Ginza Line, Tozai Line, Toei Asakusa Line Nihombashi Station (B1 Exit)

## Images for Press Use

If using only one image, choose one from Page 1.

Include image credits as provided. Do NOT trim images or overlay them with text.

\* Images with a star ★ are still subject to copyright protection.  
Please contact the Public Relations Group regarding their use.



■ Please download images from the site below.

Download images for press use here: <https://www.artpr.jp/artizon/lookinghuman>

For inquiries about this press release:  
Artizon Museum Public Relations Group  
E-mail: [publicity@artizon.jp](mailto:publicity@artizon.jp) TEL: +81 3-6263-0132(Direct)  
1-7-2 Kyobashi Chuo-ku Tokyo 104-0031