

July 19, 2024
Artizon Museum, Ishibashi Foundation

Place and Piece

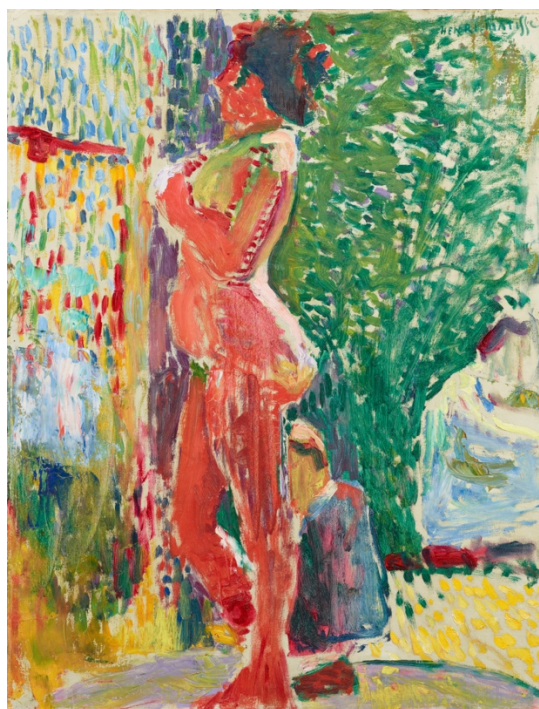
Where was this work displayed, who loved it, and why is it here now?

July 27 [Sat] - October 14 [Mon], 2024

*The number of the works is updated.



Detached Segment from Caricatures of Animals, Heian period, 12th century, Artizon Museum, Ishibashi Foundation



Henri MATISSE, *Nude in the Studio*, 1899, Artizon Museum, Ishibashi Foundation

The Artizon Museum, Ishibashi Foundation (Director: Ishibashi Hiroshi), presents *Place and Piece: Where was this work displayed, who loved it, and why is it here now?*

Today the works of art neatly displayed in a museum's gallery are public objects that anyone may enjoy seeing. Looking back to when those works were created, however, we realize that they were made as furnishings for a residence or painted to decorate a private room: they came about through a relationship with the person who owned them. Moreover, over time, they passed into other persons' hands and were inherited by later generations. This exhibition presents works by Monet, Cézanne, Fujita Tsuguharu, Kishida Ryusei, the Rimpa School, Abstract paintings—144 highly varied works from the Ishibashi Foundation Collection from many fields and many times and places—ancient and modern, East and West. Through them, we explore the situations under which works of art were created and how they were treated and passed on. Visitors will have the opportunity to imagine and experience those many contexts.

Exhibition Highlights

1. Performing Space

The theme of this exhibition is imagining and experiencing the places a work of art occupied at various times. The displays are presented to enable visitors to imagine those places. We have attempted to prepare these settings with the cooperation of lighting designer Toyohisa Shōzō, who devised lighting so that visitors could see works as Edo-period people would view sliding-door paintings, and interior stylist Ishii Kanae, who created dreamed-of spaces in which visitors would yearn to relax in a living room surrounded by works of art that suited them perfectly.

2. Three Approaches to Appreciation

At this exhibition, visitors can view the priceless curatorial resources about each work that have been built up since our predecessor, the Bridgestone Museum of Art. Simply read the QR code with your cell phone to access those materials. (That access is limited to the exhibition site.) Visitors are also invited to download our official app to enjoy an audio guide, free of charge, in addition to the brief explanatory label accompanying each work.

3. Works Displayed for the First Time

This exhibition will fill all the galleries on the three floors with works from the collection, displaying a wonderful variety of works. The exhibits include some pieces that the Artizon Museum is showing for the first time. They include a large-format work by Robert Ryman, who is known as a Minimalist painter, furniture by Ettore Sottsass, one of the leaders in the world of Italian design, and a letter written by the great warrior and unifier, Toyotomi Hideyoshi. Familiar masterpieces are joined by another side of the Ishibashi Foundation Collection.

Featured Artists *In alphabetical order by the artist's surname

AOKI Shigeru, Pierre BONNARD, Constantin BRANCUSI, Paul CÉZANNE, ENKU, FUJITA Tsuguharu, KISHIDA Ryusei, Paul KLEE, KURODA Seiki, KUSAMA Yayoi, Édouard MANET, MARUYAMA Okyo, Henri MATISSE, Piet MONDRIAN, Claude MONET, Pablo PICASSO, Jackson POLLOCK, François POMPON, Pierre-Auguste RENOIR, Robert RYMAN, SAEKI Yuzo, SAKAI Hoitsu, Ettore SOTTASS, SUZUKI Kiitsu, TOYOTOMI Hideyoshi, ZAO Wou-Ki

Works on Display



CHINA, Longquan ware *Vase, celadon, decorated with iron brown spots*, Yüan dynasty, 14th century, Important Cultural Property, Artizon Museum, Ishibashi Foundation



ENKU, *Buddhist Image*, Edo period, 17th century, Artizon Museum, Ishibashi Foundation



SAKAI Hoitsu / SUZUKI Kiitsu, *Summer, from the Twelve Months*, Edo period, 19th century, Artizon Museum, Ishibashi Foundation



FUJITA Tsuguharu, *Interior, House in Dordogne*, 1940, Artizon Museum, Ishibashi Foundation
★ © Foundation Foujita / ADAGP, Paris & JASPAR, Tokyo, 2024 C4572



Claude MONET, *Twilight, Venice*, c. 1908, Artizon Museum, Ishibashi Foundation



Pablo PICASSO, *Saltimbanque Seated with Arms Crossed*, 1923, Artizon Museum, Ishibashi Foundation ★
© 2024 - Succession Pablo Picasso - BCF (JAPAN)



KISHIDA Ryusei, *Portrait of Reiko*, 1922, Artizon Museum, Ishibashi Foundation



Ettore SOTTASS, *Totem No. 2*, 1964 (design) / 1996 (produce), Artizon Museum, Ishibashi Foundation ★
© erede Ettore Sottsass, JASPAR, Tokyo, 2024 C4572

Exhibition Overview

Exhibition title: Place and Piece
Where was this work displayed, who loved it, and why is it here now?

Organized by Artizon Museum, Ishibashi Foundation
Venue: Artizon Museum, 6, 5, 4F Galleries
Exhibition period: July 27 [Sat] - October 14 [Mon], 2024
Opening hours: 10:00 - 18:00 (until 20:00 on Fridays)
Closed: Mondays (except August 12, September 16, 23, October 14), August 13, September 17, 24
Admission (incl. tax): Timed entry system
(Online booking starts from May 28, 2024)
Online ticket: 1,200 yen
In-Person ticket (purchase at museum): 1,500 yen
Students: Free entry (Advance online booking required.)
*In-Person ticket may be purchased at the museum, if the time slot is not full.
*Advance booking is not required for children up to junior high school age.



Curators: HEIMA Rika, ITO Eriko

Artizon Museum
1-7-2 Kyobashi Chuo-ku Tokyo 104-0031 Japan
Tel. Domestic: 050-5541-8600 International: +81 47-316-2772 (Hello Dial)
<https://www.artizon.museum/en/>

Directions: 5 minutes on foot from JR Tokyo Station (Yaesu Central Exit); Tokyo Metro Ginza Line Kyobashi Station (No.6, 7 Exit); Tokyo Metro Ginza Line, Tozai Line, Toei Asakusa Line Nihombashi Station (B1 Exit)

Images for Press Use

If using only one image, choose *Detached Segment from Caricatures of Animals* or Henri MATISSE, *Nude in the Studio* from Page 1.

Include image credits as provided. Do NOT trim images or overlay them with text.

* Images with a star ★ are still subject to copyright protection.
Please contact the Public Relations Group regarding their use.



■ Please download images from the site below.
Download images for press use here: <https://www.artpr.jp/artizon/placeandpiece>

For inquiries about this press release:
Artizon Museum Public Relations Group
E-mail: publicity@artizon.jp TEL: +81 3-6263-0132(Direct)
1-7-2 Kyobashi Chuo-ku Tokyo 104-0031